

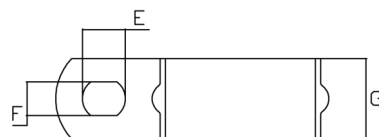
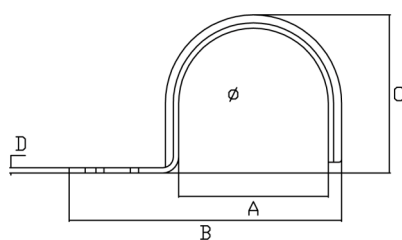
FICHA TÉCNICA GRAPAS I PATA

CARACTERÍSTICAS TÉCNICAS



- APLICACIÓN:**
 Para la instalación de tubos de agua, electricidad, gas, calefacción, neumática, aire acondicionado, etc.
- MATERIAL:**
 Fabricado en Acero Cincado Blanco, con un mínimo de 5 micras de recubrimiento.

DATOS TÉCNICOS



| COD | ØA | B | C | Agujero E x F | Fleje G x D |
|------|----|----|----|------------------|----------------|
| 9000 | 6 | 26 | 7 | Ø6.4 | 12 x 1 |
| 9001 | 8 | 28 | 8 | Ø6.4 | 12 x 1 |
| 9002 | 10 | 30 | 11 | Ø6.4 | 12 x 1 |
| 9003 | 12 | 32 | 12 | Ø6.4 | 12 x 1 |
| 9004 | 14 | 34 | 15 | Ø6.4 | 12 x 1 |
| 9005 | 15 | 35 | 17 | Ø6.4 | 12 x 1 |
| 9006 | 16 | 37 | 18 | Ø6.4 | 12 x 1 |
| 9007 | 18 | 41 | 20 | 9 x 6.2 | 15 x 1.2 |
| 9008 | 20 | 43 | 22 | 9 x 6.2 | 15 x 1.2 |
| 9009 | 22 | 46 | 24 | 9 x 6.2 | 15 x 1.2 |
| 9010 | 25 | 48 | 26 | 9 x 6.2 | 15 x 1.2 |
| 9011 | 26 | 49 | 28 | 9 x 6.2 | 15 x 1.2 |
| 9012 | 28 | 51 | 30 | 9 x 6.2 | 15 x 1.2 |
| 9013 | 30 | 53 | 32 | 9 x 6.2 | 15 x 1.2 |
| 9014 | 32 | 55 | 34 | 9 x 6.2 | 15 x 1.2 |
| 9015 | 37 | 60 | 39 | 9 x 6.2 | 15 x 1.2 |
| 9016 | 40 | 63 | 42 | 9 x 6.2 | 15 x 1.2 |
| 9017 | 42 | 65 | 44 | 9 x 6.2 | 15 x 1.2 |
| 9018 | 47 | 70 | 49 | 9 x 6.2 | 15 x 1.2 |
| 9019 | 50 | 73 | 52 | 9 x 6.2 | 15 x 1.2 |